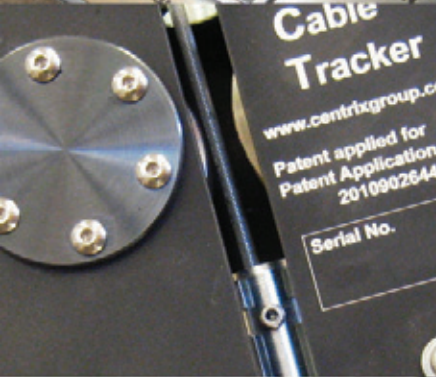
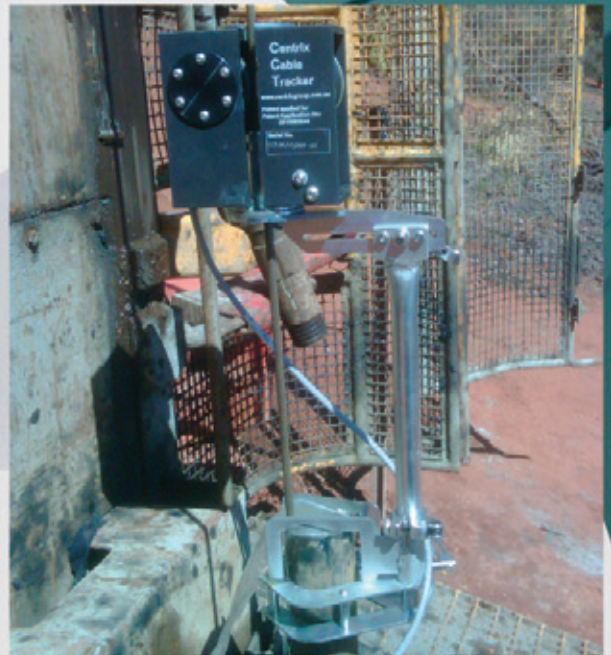


# Centrix Cable Tracker (CCT)

Patent Application No. 2010902644



## Centrix Cable Tracker (CCT)



### General Description

The Centrix Cable Tracker (CCT) was developed by the Centrix Group as a lightweight and accurate tool to measure depth and line speed of a wireline.

Through the use of existing cable such as a drill rig's wireline, the CCT replaces the need for an external wireline winch in a wide range of surveying applications.

The CCT is equipped with a number of features to assist the operator with their surveying tasks and also provides measures to protect expensive surveying equipment.

The innovative design allows a simple method of attachment with minimal set up time.

A rechargeable 12Volt battery provides portable power, approved for transport by air (DOT, IATA, FAA and CAB certified).

The CCT comes with a detailed operating manual and is packaged in a watertight, dust and crush proof case.

The standard kit components are shown in Figure 1 and consist of the following:

1. .... 12 Volt DC Charger
2. .... Software Upgrade Cable
3. .... Encoder Cable
4. .... Depth Encoder Unit
5. .... Operational User Manual
6. .... Extension Post
7. .... Pipe Clamp
8. .... Depth Display Unit

### CCT Components

The CCT comprises the following 3 main parts:

#### The Depth Encoder Unit ("The Workhorse")

This is the main part that is attached to the cable (eg. the drill rig cable) from which the necessary information is collected via an optical shaft encoder.

#### The Depth Display Unit ("The Brain")

This is a HMI/PLC unit that translates the information gathered from the Depth Encoder Unit into meaningful information such as line depth and line speed.

#### The Clamping Device

The clamping device holds the Depth Encoder Unit in position.

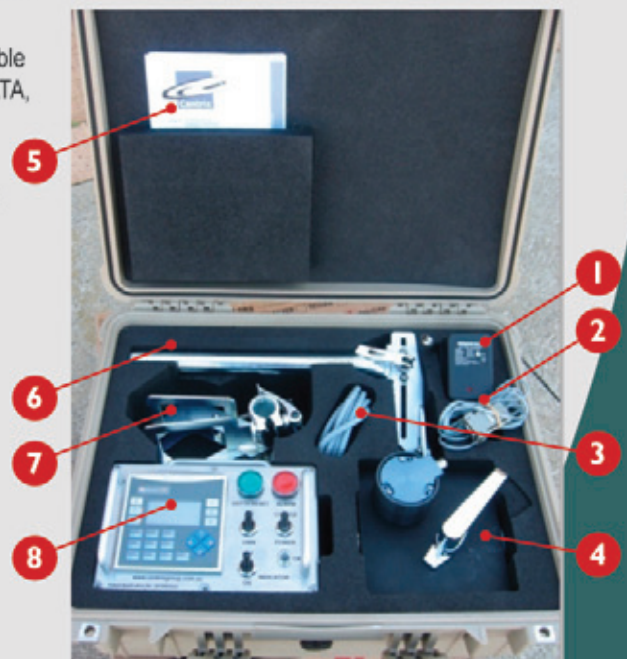


Figure 1

### Technical Specifications

**Depth Accuracy:** +/- 0.1m over 100m

**Wireline Dimension:** up to 12mm

**Maximum Wireline Speed:** 150m / min

**Battery Life:** 12hrs continuous usage

**Total Weight (incl case):** 15kg

### Case Dimensions

52cm (L) x 43cm (W) x 21cm (D)

### Operating Temperature

Depth Encoder Unit: -40° to +70° C

Depth Display Unit: 0° to 50° C

### Environmental Rating

Depth Encoder Unit: IP66

Depth Display Unit: IP65

### Additional Features

- Location Arrival Signal
- Splice Positioning Functionality
- Zero Position Signal
- Low Battery Signal
- Powerful PLC Functionality



Address: 24 Adams Drive  
Welshpool WA 6106

Phone: +61 (08) 9486 2500

Fax: +61 (08) 9486 2501

Email: [admin@centrixgroup.com.au](mailto:admin@centrixgroup.com.au)

Website: [www.centrixgroup.com.au](http://www.centrixgroup.com.au)